

# What's New?

Niihama City

No.173 **January** 2010

Published by SGG Niihama



A HAPPY NEW YEAR!



## NEW YEAR'S CELEBRATIONS AROUND THE WORLD

By Kristi Narbett

All over the world, people celebrate the arrival of the New Year in a variety of interesting and exciting ways. Many countries follow the Gregorian calendar, and the New Year begins on January first. Other cultures have different traditions, using the Lunar calendar, the planting of the crops in the spring, or harvest time in the fall to mark the passing of a year.

Whenever celebrations might take place, and whatever festivities they might include, people often share common feelings as one year comes to a close, and the next begins. We look back and reflect on the good times, the not-so-good times and what might have been. We think about the family and friends we have enjoyed, new people and places we have met and goals that may have been realized. We look forward to the opportunities the New Year might present with hope and excitement. We plan adventures with anticipation that the coming year will be even better than the last. Let's see how the New Year is welcomed in a few different countries.

Many western and English speaking countries share very similar ways to celebrate the end and beginning of the year. Family and friends gather to enjoy parties, drinking, concerts and fireworks on New Year's Eve, before counting down to midnight and the official start to the next year. Often the New Year will begin with resolutions for a new and improved self.

In Germany, Berlin hosts Europe's largest New Year's Eve celebration, where

over a million partiers celebrate, and fireworks light up the sky over the infamous Brandenburg Gate. Some Germans may also perform a traditional “lead pouring”-- dropping melted lead into a bowl of water – to predict their fates for the coming year.

Like Japan, the Ano Nove, or Revillion, in Brazil is one of the country’s main holidays. Brazilians, well-known for their ability to enjoy themselves, do so in their summer season with concerts and fireworks at some of the most famous beaches in the world. On the first day of the year, lentils are often served to ensure good luck and prosperity.

According to the lunar calendar, China’s official New Year will begin in a few weeks at the next new moon. Celebrations include great parties and parades in the streets, and firecrackers and fireworks to scare away the evil spirits. Children are often the lucky recipients of red envelopes containing lucky money from friends and family. It is also very important to pray and give thanks to ancestors, the gods, and even older relatives.

In Africa, celebrations will depend on where you are. Although most Africans will enjoy New Year’s Eve on December 31 and a holiday on January 1, a number of different New Year’s occur throughout the year. Coptic Christians in Ethiopia and Egypt enjoy their New Year in September and celebrate Christmas on January 7. Many North African Muslims celebrate the New Year slightly later in January, not long after the traditional Edi ul-Adha festivals in December, where sheep or goats may be slaughtered.

Father Frost visits families on New Year’s Eve in Russia and leaves children presents under the tree. Children should be good, or risk being frozen by the Eastern European version of the Santa character. The old Soviet holiday was celebrated according to the Julian calendar, so some Russians enjoy a second New Year’s Day two weeks later.

So no matter where or how you and your loved ones may have celebrated this most recent New Year’s, hopefully it was a safe and enjoyable one. And here’s to a coming year of peace and happiness for all of us.

Kristi is from Vancouver, Canada, and is enjoying his second extended stay in Niihama, this time with his wife and son. He enjoys most sports, travelling, reading and watching movies.

## January Events

- **FORUM** on what residents in Niihama can do to get along well together in a multicultural society.

An opening speech by Ruth Vergin (Assistant Professor of Ehime U.) on "The current situation of foreigners living in Japan."

January 16, 14:00 ~ at Women's Plaza.  
Language used is Japanese.

For further information, please contact  
Niihama City Hall Tel 65-1218.



*Ruth Vergin*

- **Photo Contest of Niihama Taiko Festival**

January 18 – 22, on the 1st floor of City Hall.

Contact: Niihama Tourist Bureau 32-4028

- **Illumination at Minetopia Besshi**

Until January 15, 17:00-22:00.

Contact: Minetopia 43-1801

- **Art Exhibition**

Oil paintings by Hiroshi Morimoto

January 16-24 at Niihama Folk Art Gallery (next to City Hall)

Contact: 33-1030

## Five Industrial Heritage Sites in Niihama have been registered as Tangible National Cultural Properties.

(from the monthly City News 2009/8)

This time we will introduce some of them.

### ①. Yamane Stand



This fully-dressed stadium for track and field was built by Washio Kageji, the chief executive officer of Sumitomo Besshi Copper Mine Company, in 1927. It was one of his many city projects for Niihama to have survived the closure of the copper mine. Sumitomo employees volunteered to construct this stand and tens of thousands of people use it to enjoy their autumn sports days. The remaining 27 stone stairs stretch about 170m and this is where the Yamane Taiko Competition is held every autumn. It attracts many spectators as Niihama Fall Festival is very popular nationwide.

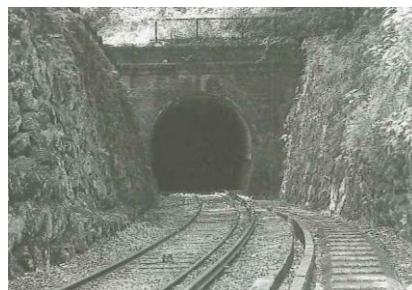
### ②. Ashitanni-gawa Railway Bridge



The bridge was built in 1892 when the Lower Besshi Mine Railway opened. Parts of this bridge were made in Germany. Only a few bridges like this still exist in Japan now. Please take the sightseeing train and enjoy the beautiful bow-string bridge.

### ③. Old Besshi Mine railway tunnel

This tunnel was designed by Sumitomo engineer Ogawa Togo, for the Lower Besshi Mine Copper Mine Railway built in 1893. It is 92.55m long and 3m wide. Its side-walls are strongly built of brick and it is still used as a tourist attraction of Mine-topia Besshi.  
(to be continued)



## MOVIE

### *TOHO CINEMAS Niihama (AEON Shopping Center)*

November 21 ~ 2012	English
December 5 ~ UP	English/Dubbed
December 12 ~ PUBLIC ENEMIES	English
December 23 ~ AVATAR	English/Dubbed
January 22 ~ OCEANS SURROGATES	English
January 23 ~ THE IMAGINRIUM OF DOCTOR PARNASSUS	English
January 28 ~ THE LOVELY BONES	English

#### Information Service

Internet: <http://niihama-aeonmall.com>

Tape (24 hrs): 0897-35-3322 (in Japanese)



Contributed by **Adam Schartup**

**SGG** would welcome any suggestions, questions or ideas for monthly articles.

email: [yukiko-m@shikoku.ne.jp](mailto:yukiko-m@shikoku.ne.jp)

[kasi4386@plum.ocn.ne.jp](mailto:kasi4386@plum.ocn.ne.jp)

[sheep@abeam.ocn.ne.jp](mailto:sheep@abeam.ocn.ne.jp)

The editors for this month are H.Yamamoto & A.Akiyama

## ONE POINT JAPANESE

**A :** 明けまして、おめでとう ございます。

Akemashite omedetō gozaimasu. (Happy New Year!)

**B :** 明けまして、おめでとう ございます。

Akemashite omedetō gozaimasu. (Happy New Year to you, too.)

**A :** 今年も よろしく お願い します。

Kotoshi mo yoroshiku onegai shimasu.

(Let's see more of each other socially this year.)

**B :** 今年も よろしく お願い します。

Kotoshi mo yoroshiku onegai shimasu. (I wish you the same.)

ところで、お正月 休みは どこか 行きましたか。

Tokorode, oshogatsu yasumi wa dokoka ikimashita ka.

(So - did you go somewhere during the New Year holiday?)

**A :** ええ。神社へ 初詣に 行きました。

Ee. Jinja e hatsumōde ni ikimashita.

(Yes. I paid the first New Year's visit to a shrine.)

**B :** 込んで いた でしょう？

Konde ita deshō? (It was crowded, right?)

**A :** ええ。長い行列が できて いて、びっくり しました。

Ee. Nagai gyōretsu ga dekiteite, bikkuri shimashita.

(Yes. There was a long queue, so I was very surprised.)

**B :** おみくじは 引きましたか。

Omikuji wa hikimashita ka. (Did you pick a fortune?)

**A :** はい。「大吉」だったので、今年はいい ことが ありそうです。

Hai. "Daikichi" datta node, kotoshi wa ii koto ga arisō desu.

(Yes. It was "Daikichi," great fortune, so it looks like I'll get good fortune this year.)

**B :** わたしは もう いい ことが あったん ですよ。

Watashi wa mō ii koto ga attan desu yo. (I've already had good fortune!)

**A :** いいこと？ Ii koto? (Good fortune?)

**B :** ええ。Ee. (Yes.)

年末に 買った たらくじで、100万円 当たったんです。

Nenmatsu ni katta takarakuji de hyakumanen atattandesu.

(I won one million yen with the lottery ticket I bought at the end of last year.)

**A :** えーっ！本当 ですか。Ee? Hontō desu ka. (Wow! Is that true?)

**B :** ええ。来週の 新年会で、パーツと 使おうと 思っています。

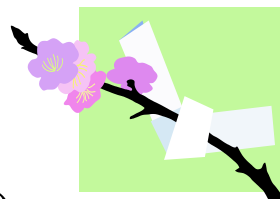
Ee. Raishū no shinnenkai de, pātto tsukaō to omotteimasu.

(Yes. I'm going to spend all of the money at the New Year's party next week.)

**A :** えーっ！秘密に しておいた ほうが いいと 思います けど…。

Ee! Himitsu ni shiteoita hō ga ii to omoimasu kedo . . .

(Oh my gosh! It's better to keep it secret, I think...)



<by Niihama Nihongo no Kai>

NNK also provides Japanese lessons for foreigners living in Niihama.

Feel free to contact us at: Tel : 080-3920-0529 (Takako Hattori).

e-mail : pxyfy438@ybb.ne.jp